

# BlueLite X1 Chaser Sample

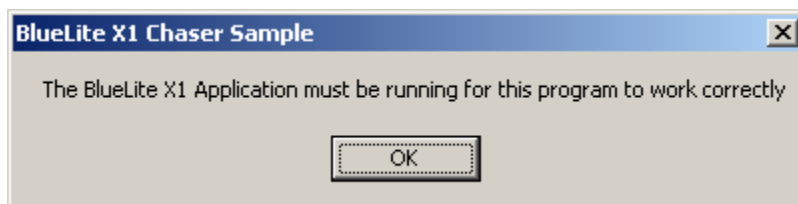
03/20/05

## Introduction

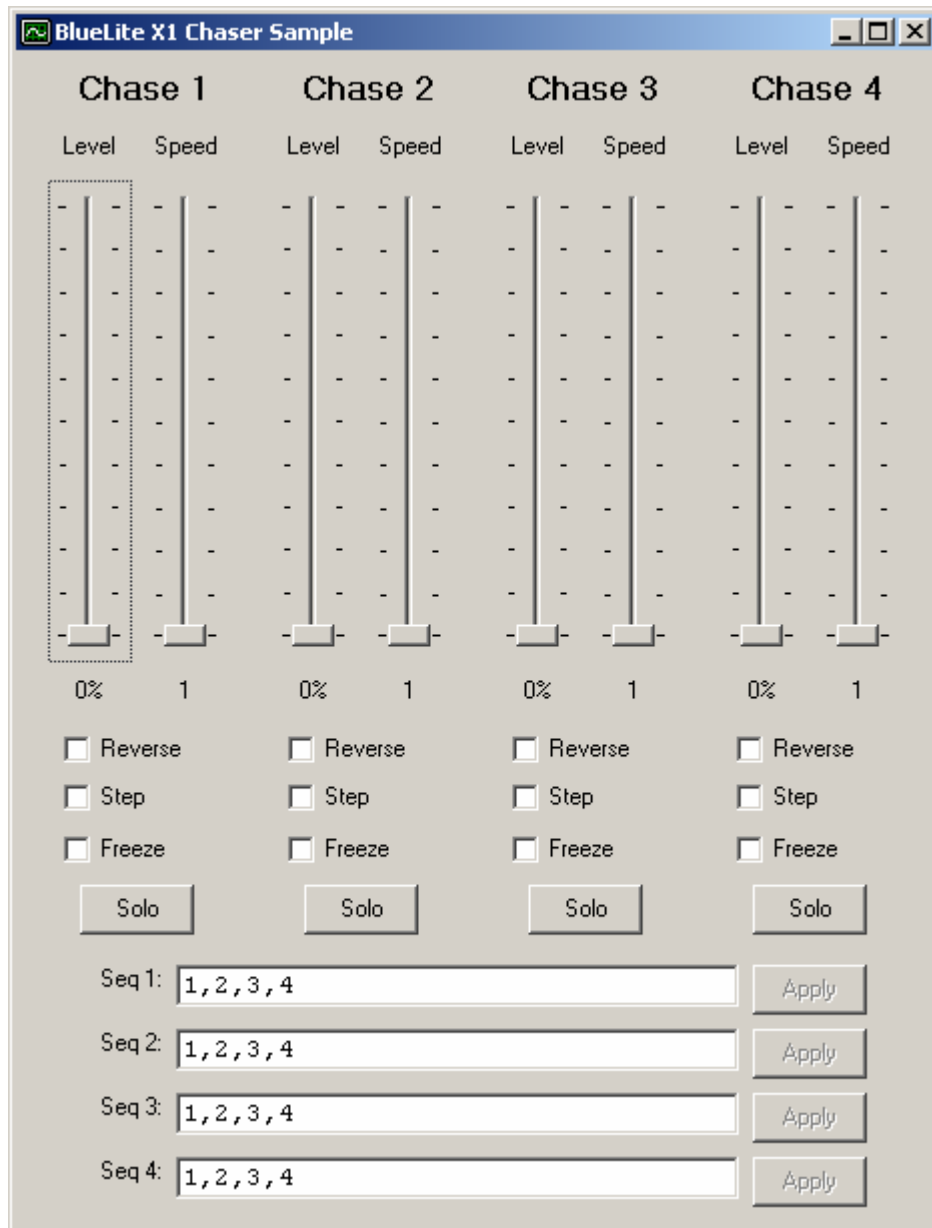
This application provides four simple 'Chasers' for the BlueLite X1 Show Control System. It is written in Microsoft's Visual Basic 6.0 and uses the BlueLite X1 Automation API. Documentation for the API along with source code for this application can be downloaded from [www.innovateshowcontrols.com/x1automation](http://www.innovateshowcontrols.com/x1automation).

## Chaser Usage

The BlueLite X1 Application (version 1.1 and above) must be running for this application to operate correctly. If you start the program while the X1 Application is not running, an error message will be displayed.



With the X1 Application running, the Chaser Sample will display the following screen:



The screen represents 4 identical chasers. Each chaser uses an X1 XY Crossfader pair to do its work, so it should be noted that these chasers will potentially conflict with a running Event List in the X1.

Each Chase is a 'Sequence' of X1 Cue Numbers. The Cue sequence for each chaser can be entered in the appropriate text field at the bottom of the screen. Cue numbers should be separated with commas (",") and the 'Apply' button next to the text field must be pressed for the changes to take effect.



By default, chasers fade between cues in the sequence. Selecting 'Step' forces the fade time between cues in the sequence to 0 (immediate).

Selecting 'Freeze' will stop the chaser from updating.

The 'Solo' button forces the specified Chaser's Level to 100% and the level for the other three Chasers to 0%.

## **Additional Support**

In addition to the documentation and source code available at [www.innovateshowcontrols.com/x1automation](http://www.innovateshowcontrols.com/x1automation), support for the BlueLite X1 Automation API is also available via the Innovate Show Controls online forum. This site (<http://www.innovateshowcontrols.com/forum/>) is an excellent way to directly interact with Innovate Show Controls engineers and staff.