

BlueLite X1 WMP Playlist Sample

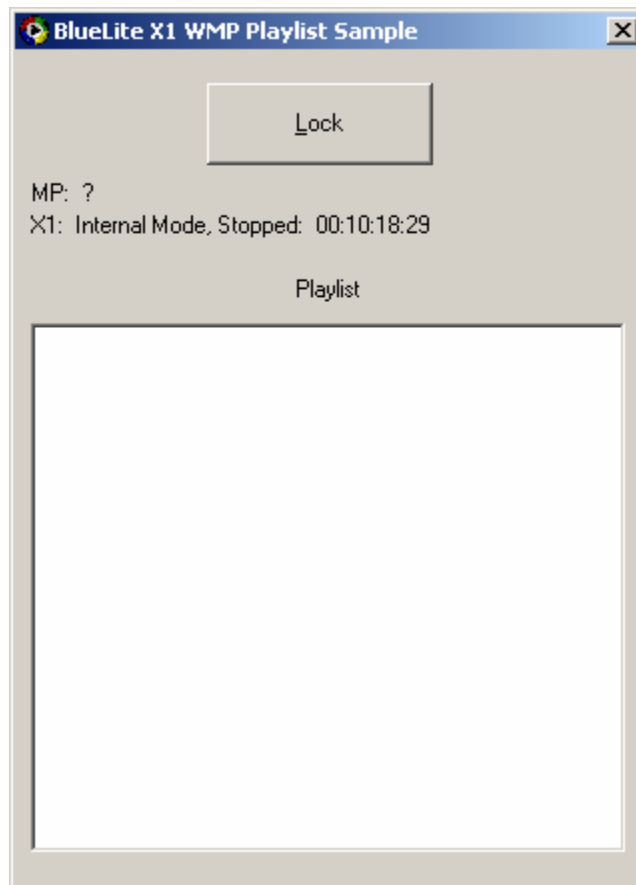
04/27/05

Introduction

This application allows a Windows Media Player™ 'Playlist' to 'Track' the internal clock of the BlueLite X1 Show Control System. It is written in Microsoft's Visual Basic 6.0 and uses the BlueLite X1 Automation API. Documentation for the API along with source code for this application can be downloaded from www.innovateshowcontrols.com/x1automation.

Playlist Sample Usage

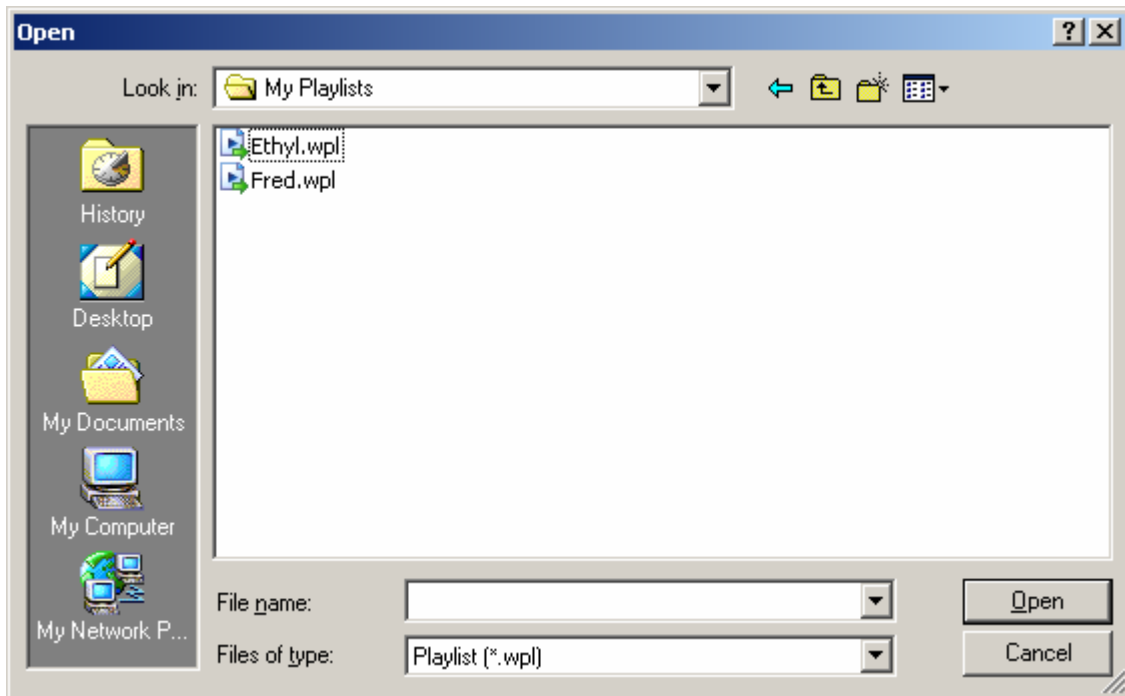
When the Playlist Sample is started, the following screen will appear:



In order to use playlist tracking, the following criteria must be met.

- The BlueLite X1 Application (version 1.1 and above) must be running, and must be in Internal Mode
- Windows Media Player (version 9.0 and above) must be installed

The Windows Media Player can be downloaded from www.microsoft.com. Once the above requirements are met, the 'Lock' button can be pressed. You will be prompted to select a Windows Media Player 'Playlist' file (*.wpl).



Once Locked, the application will select the Playlist and pause playback:



At this point, selecting Play or Record on the X1's Event List Window will cause the Playlist to seek to the appropriate track and time and begin playing. For example, starting at an X1 time of 00:00:00:00 will begin playing the Playlist from its start. An X1 time of 00:00:30:00 will start 30 seconds into the list, and etc.

Important Note: With certain media and under certain conditions, the Windows Media Player can be significantly off speed when it plays. That is, if you play a track from 00:00 to 05:30, exactly five minutes and thirty seconds may not elapse on a clock or stop watch. If you are using media or a sound card that incurs such problems with this application, some error may occur when you begin playing the X1 at times other than 00:00:00:00.

Additional Support

In addition to the documentation and source code available at www.innovateshowcontrols.com/x1automation, support for the BlueLite X1 Automation API is also available via the Innovate Show Controls online forum. This site (<http://www.innovateshowcontrols.com/forum/>) is an excellent way to directly interact with Innovate Show Controls engineers and staff.