

BlueLite X1 Scheduler Sample

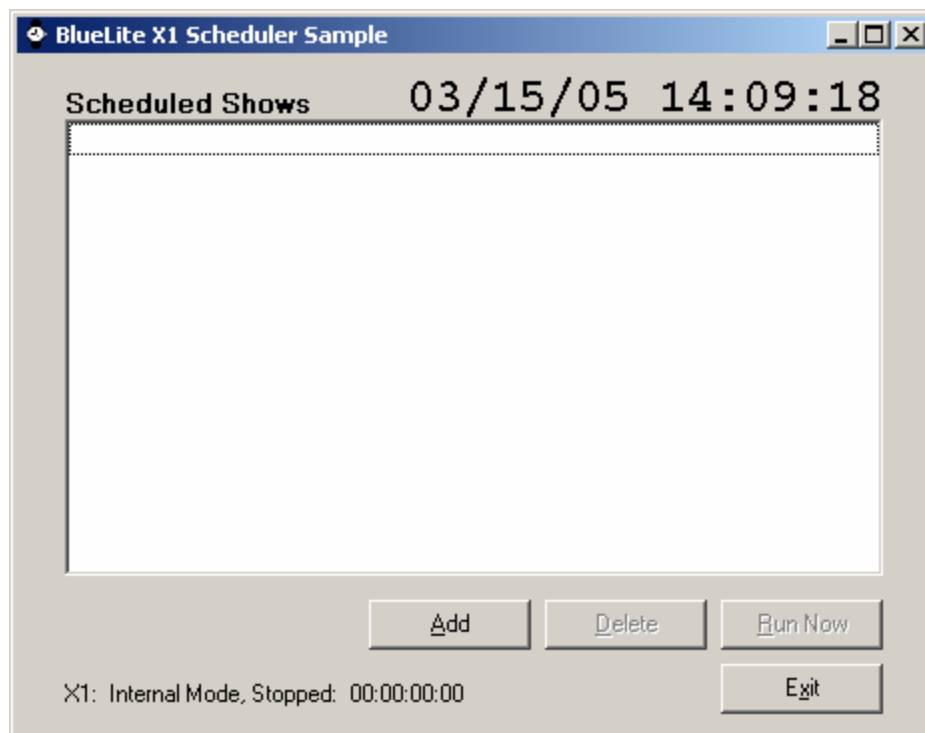
06/15/05

Introduction

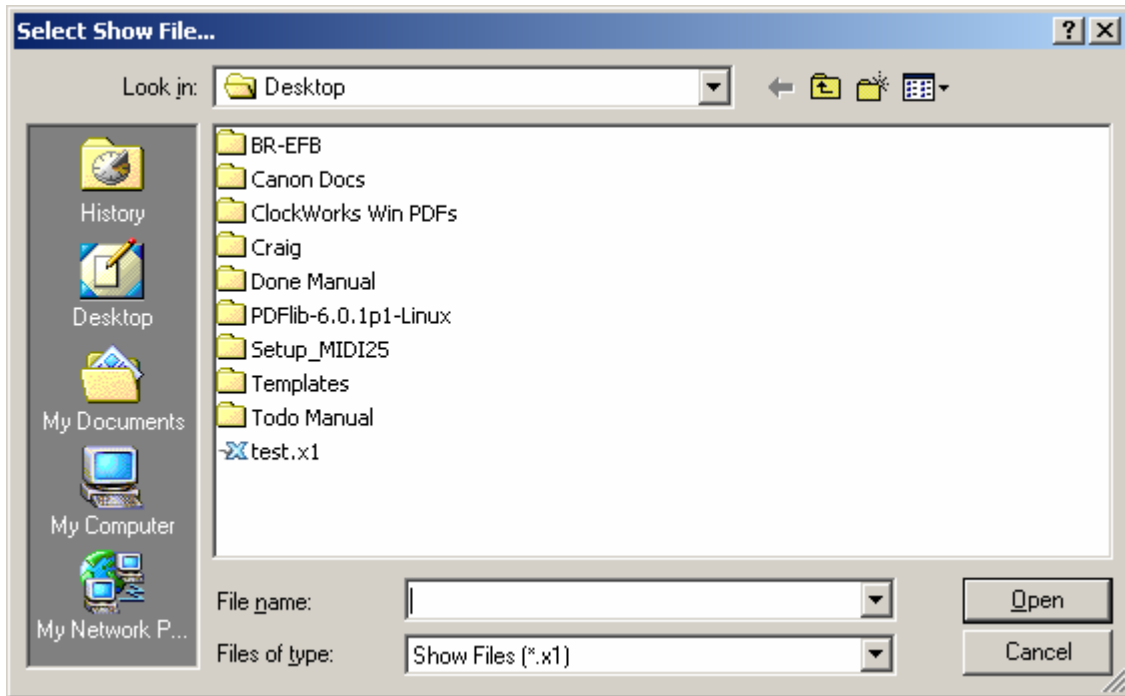
This application is a simple Show Scheduler for the BlueLite X1 Show Control System. It is written in Microsoft's Visual Basic 6.0 and uses the BlueLite X1 Automation API. Documentation for the API along with source code for this application can be downloaded from www.innovateshowcontrols.com/x1automation.

Scheduler Usage

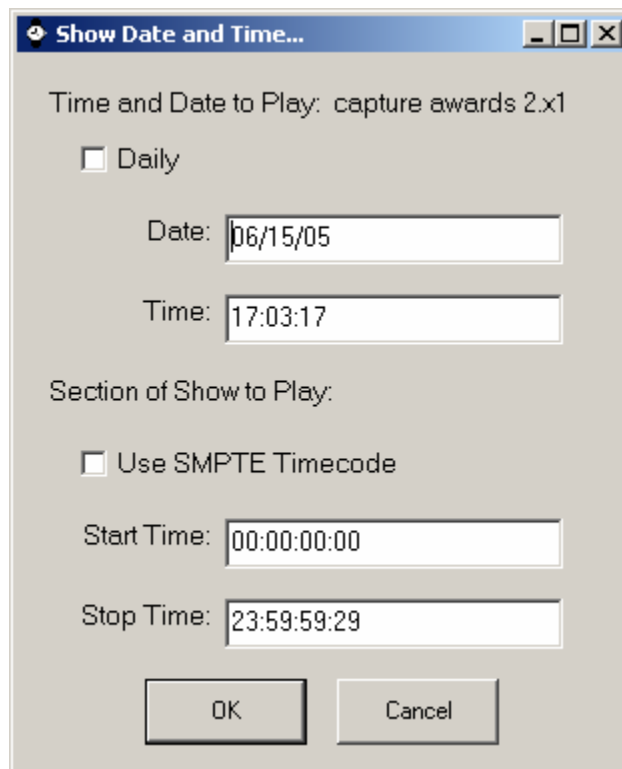
The BlueLite X1 Application (version 1.1 and above) must be running for this application to operate properly. When first started, the Scheduler will display the following screen:



In order to Schedule a show, click the 'Add' button. The program will first prompt for an X1 show file to play:



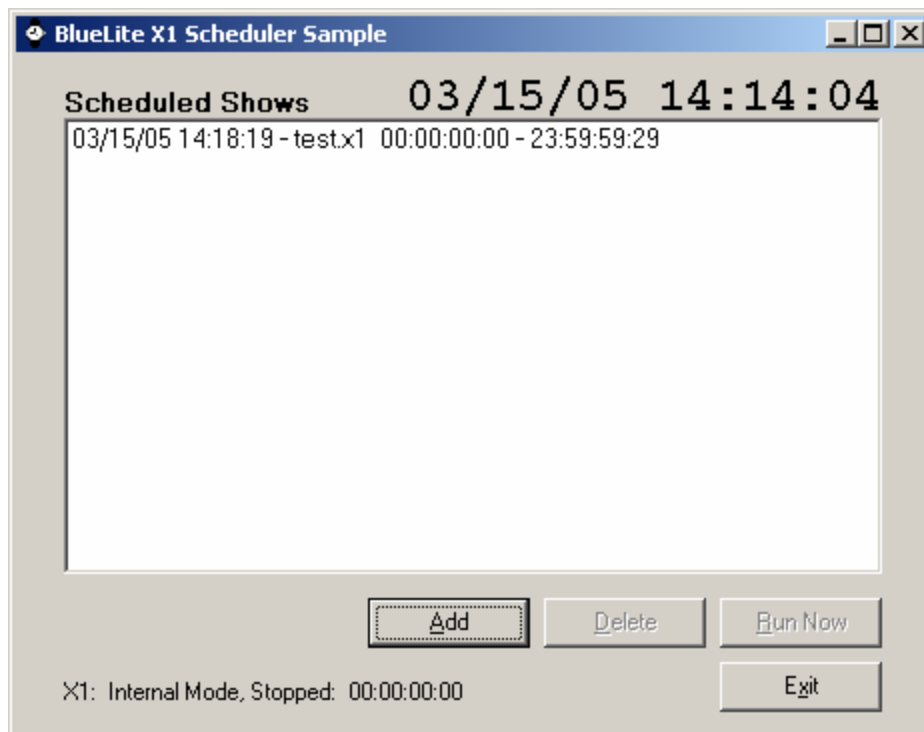
Once a show file is selected, the program will next prompt for scheduling details:



The first two fields are used to enter the Date and Time you would like the Show File to be played. By default, this is set to 5 minutes ahead of the current time. If the Daily option is selected, the Date field will be disabled and the show will repeat each day at the designated time.

The bottom half of this dialog box controls how the scheduled file will be played. If the 'Use SMPTE Timecode' check box is selected, the show will be loaded and played in Timecode mode at the designated date and time. If Timecode is not selected, the file will be played in Internal mode and start and stop times can be specified. By default, the show will be played from the beginning (00:00:00:00) and the X1 will continue playing until either the time hits maximum (23:59:59:29), or a different show is triggered.

Once parameters have been entered, the scheduled show appears in the list on the main screen:



At the designated time and date, the show will be played and the item will be automatically removed from the list. A scheduled show can be executed manually by selecting it with the mouse and then clicking on 'Run Now'.

Scheduled shows can also be deleted from the list by selecting them with the mouse and using the 'Delete' button.

Additional Support

In addition to the documentation and source code available at www.innovateshowcontrols.com/x1automation, support for the BlueLite X1 Automation API is also available via the Innovate Show Controls online forum. This site (<http://www.innovateshowcontrols.com/forum/>) is an excellent way to directly interact with Innovate Show Controls engineers and staff.